

Combat Between COVID-19 And Online Learning

Anahi Ramirez
LAS 1420
hd6278@wayne.edu



WAYNE STATE
UNIVERSITY

Center for Latino/a and Latin American Studies

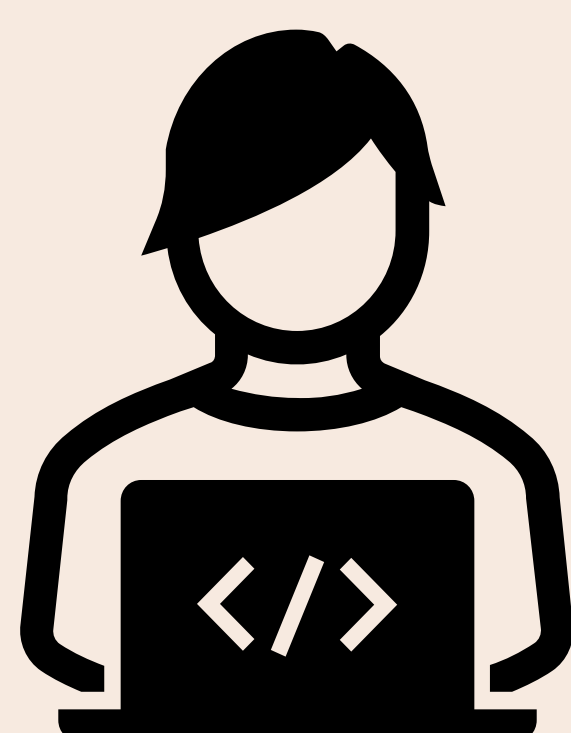
Introduction

COVID-19 was declared a pandemic in March 2020 by the World Health Organization and has radically transformed the lives of people around the world, including students, forcing them to work online. The pandemic continues to disrupt schooling in the United States and has significantly impacted high school and college students in the Latinx community, the largest ethnic minority in the United States. For the past year, Latinx students attending online school have faced challenges such as accessibility to equipment and teachers/instructors, finances, time management, procrastination, distractions, and internet issues.

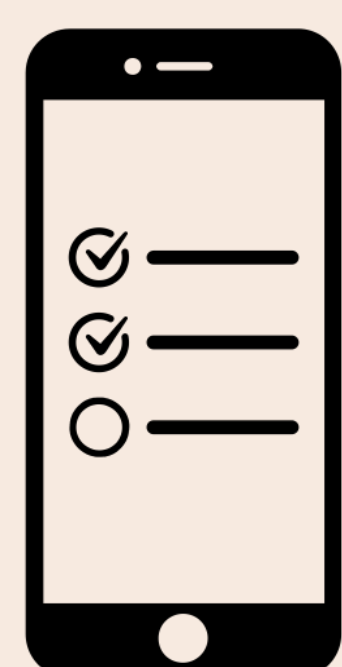
Research Question

How has COVID-19 disproportionately impacted Latinx students learning having now been online for a year?

Methods

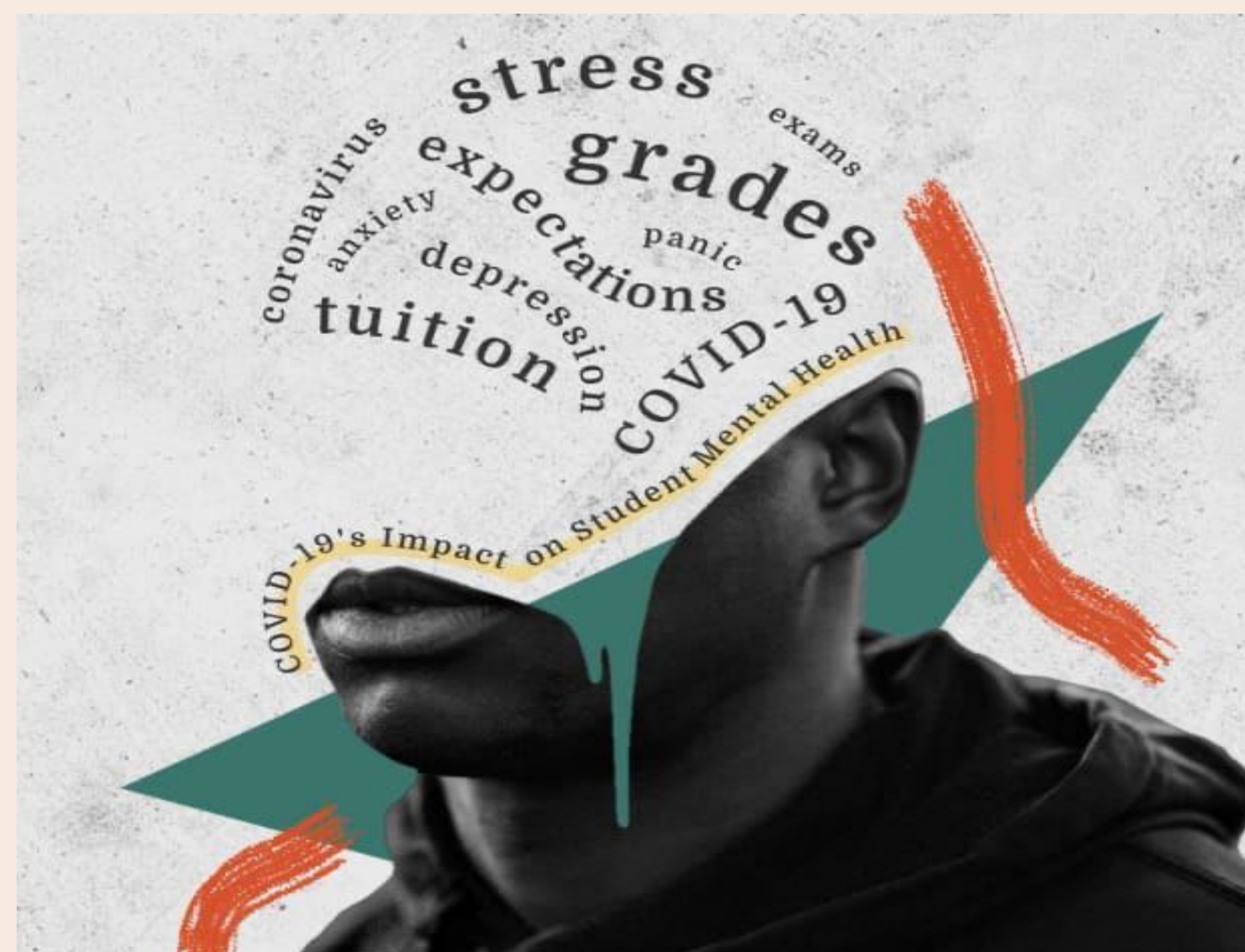


- Research was conducted through online scholarly and peer-reviewed articles.



- Conducted online surveys on 98 Latinx students attending high school and college in 2020 and 2021.

Results

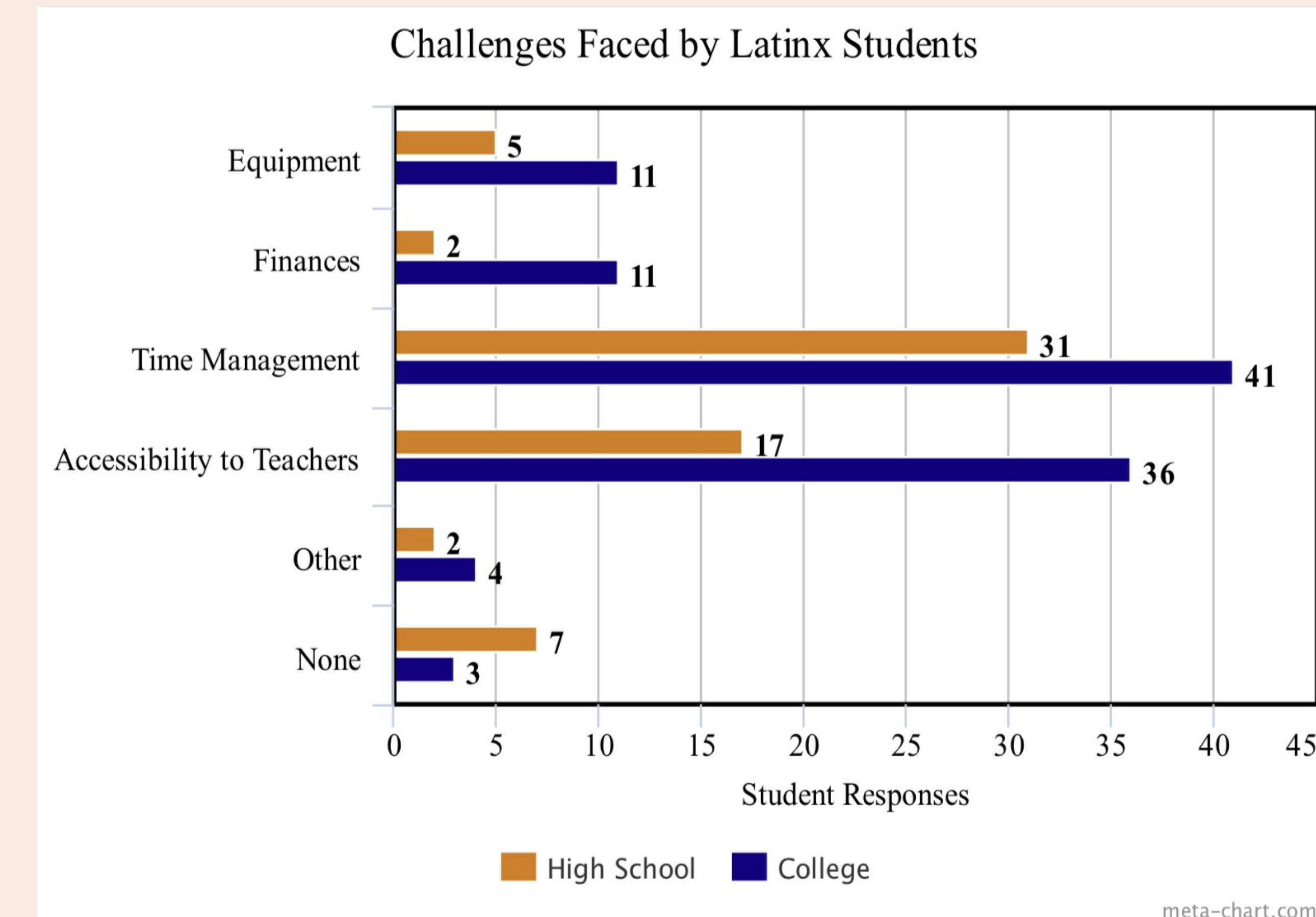


Jennifer Zuniga, an 18-year-old Latinx college student who studies psychology at Wayne State University was overwhelmed when her last year of high school and first year of college was forced to move courses online. Months later, Zuniga struggles and states, “It’s difficult to focus while completing assignments because there are multiple factors that prevent me from providing my full attention to my school work.”



Female, High School Latinx student aged 16 states, “I feel like learning online just encourages us to not learn at all, since we are at home, anything can distract us unlike going to school where we can learn better.”

Results



Conclusion

Overall my survey responses are consistent with the academic material, finding time management, motivation, distractions, and teacher/instructor accessibility all to be factors that have impacted many students’ experiences of online learning and have taken a great toll on their mental health.

- After analyzing the survey responses, I was not surprised to see time management and accessibility to teachers as top challenges Latinx students face.
- Personally, these are all challenges I have not faced because I have managed to follow a routine that makes time for school, work, and leisure time.
- Future research should focus on making comparisons and contrasts of Latinx student’s efficiency of online learning versus face-to-face learning.

References

- Louden, Jennifer Eno, and Sarah M. Manchak. *Social Networks and Treatment Adherence Among Latino Offenders With Mental Illness*, vol. 15, 2017, pp. 109–118., doi:10.18411/2017-023.
- Eghaneyan, Brittany H., and Erin Roark Murphy. “Measuring Mental Illness Stigma Among Hispanics: A Systematic Review.” *American Psychological Association*, vol. 5, no. 3, 2020, pp. 351–363.
- Franco, José A., and L. Mark Carrier. “Social Media Use and Depression, Anxiety, and Stress in Latinos: A Correlational Study.” *Human Behavior and Emerging Technologies*, vol. 2, no. 3, 2020, pp. 227–241., doi:10.1002/hbe2.205.
- Lawton, Kathryn E., et al. “The Role of Acculturation Differences and Acculturation Conflict in Latino Family Mental Health.” *American Psychological Association*, vol. 6, no. 2, 2017, pp. 94–114.
- Ramirez, Anahi. “Combat Between COVID-19 and Online Learning.” *Google Forms*, Google, 8 Apr. 2021, docs.google.com/forms/d/e/1FAIpQLStgJkIMMFpeul8jd56UXCtcf-Y18nUzUCkQyZVHepHR6e-26A/viewform.
- Schwartz, Sarah. “Surveys: Students Want More Opportunities to Connect With Teachers During the Pandemic.” *Education Week*, Education Week, 17 Dec. 2020, www.edweek.org/leadership/surveys-students-want-more-opportunities-to-connect-with-teachers-during-the-pandemic/2020/12.
- Thompson, Evan. “How COVID-19 Has Impacted Student Mental Health.” *TheBestSchools.org*, Thebestschools.org, 23 Oct. 2020, thebestschools.org/magazine/covid-19-impact-student-mental-health/.